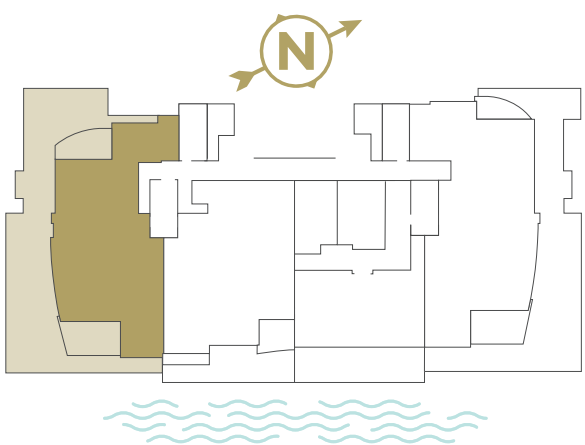
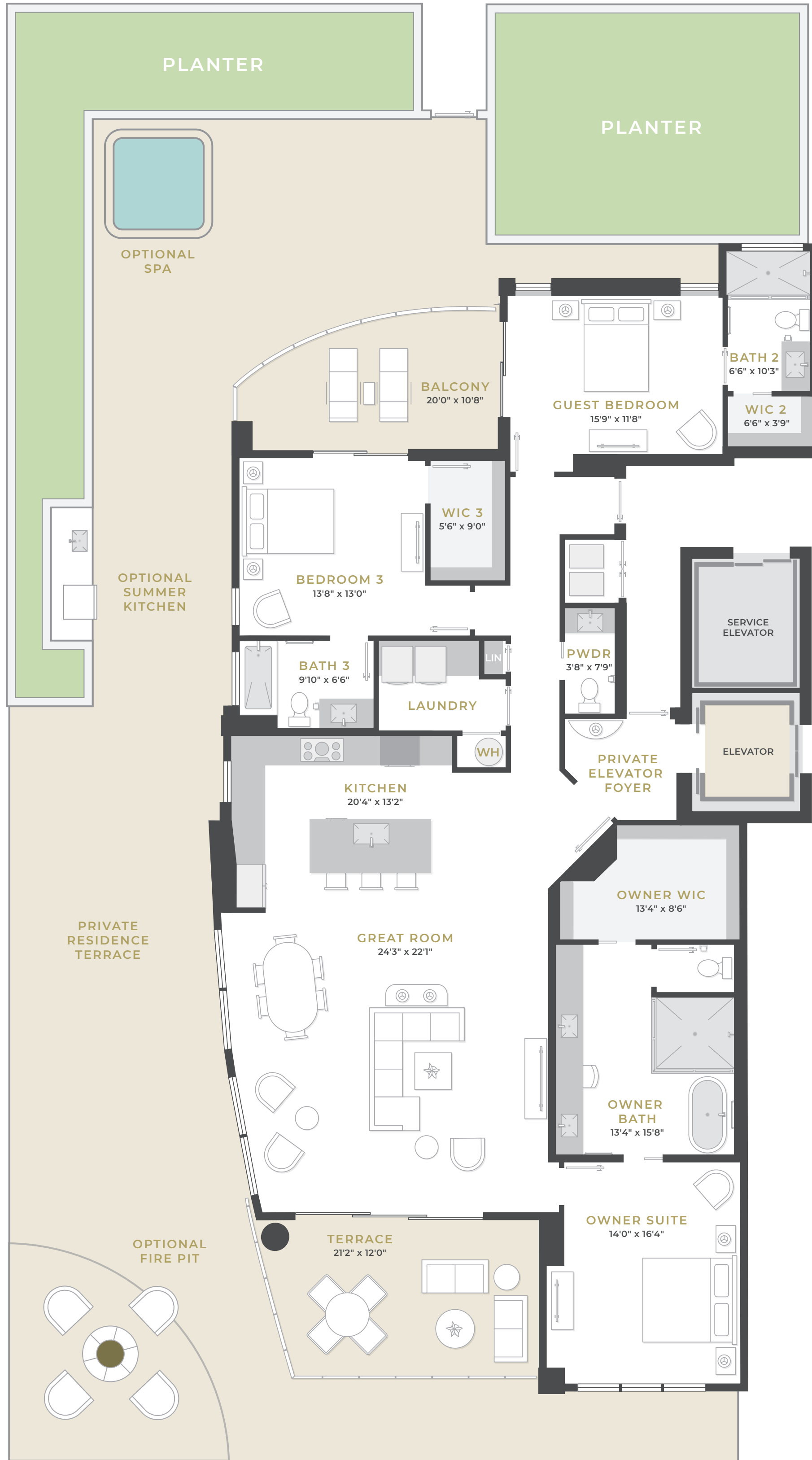


RESIDENCE 4 - LEVEL 4



3 Bedrooms | 3.5 Baths | 10 Ceilings | Private Elevator Foyer

Interior	2538 sq. ft.
Terrace	425 sq. ft.
Extended Terrace	2084 sq. ft.
Total Residence	5047 sq. ft.



ORAL REPRESENTATIONS CANNOT BE RELIED UPON AS CORRECTLY STATING REPRESENTATIONS OF THE SELLER. FOR CORRECT REPRESENTATIONS, MAKE REFERENCE TO THIS BROCHURE AND TO THE DOCUMENTS REQUIRED BY SECTION 718.503, FLORIDA STATUTES, TO BE FURNISHED BY A SELLER TO A BUYER OR LESSEE.

This project has been filed in the state of Florida and no other state. This is not an offer to sell or solicitation of offers to buy the condominium units in states where such offer or solicitation cannot be made. Prices and availability are subject to change at any time without notice. Dimensions & specifications may vary and are subject to change at any time without notice. Actual views may vary. Views shown cannot be relied upon as the actual view from any particular unit within the condominium. Views will differ depending on conditions such as location, skyline and weather. Prospective purchasers should be aware that any view from the condominium property may in the future be limited or eliminated. Sketches and illustrations are artist's renderings. Details and field variations are subject to changes. All dimensions are approximate and all floor plans and development plans are subject to change. Community features, amenities and pricing are approximate and subject to change without notice. Developer reserves the right to replace with items of equal value. There are various methods for calculating the total square footage of a condominium unit, and depending on the method of calculation, the quoted square footage of a condominium unit may vary by more than a nominal amount. The dimensions stated in this brochure are measured to the exterior boundaries of the exterior walls and the centerline of interior demising walls and, in fact, are larger than the dimensions of the "Unit" as defined in the Declaration of Condominium which is measured using interior measurements.